



First Class Units Inc



+17136890047



Contact: jaafarhusein@yahoo.com



:5805 winsome Ln Houston TX 77057 Ste201

About Us

BUILDING FOR A PURPOSE.

First Class Units Inc is a value driven company filled with progressive thinkers, skilled experts and trusted workers. We are passionate about exceeding our client's expectations and making our community better-one project at a time.

Our fields of expertise range from higher education to healthcare projects with a lot of in between. Our projects are never easy, and we like it that way. New challenges force us to get creative, and really gets our staff excited to build. We hire only the best people and train them with the latest technologies and latest construction methods. This has been our culture since the foundation of First Class and we continue to receive national recognition as an industry leader regarding integrity, innovation, and safety because of it.

Software's and new technologies like AutoCAD, 3Dmax, Adopt, Primavera and On-Screen Takeoff are only a few of the devices we use to ensure our projects are delivered on time and on budget. Our seasoned staff is always in a mental state that emphasizes efficiency and productivity without sacrificing safety and ethics.

Safety is our passion. Our strong commitment to safety is visible at every level of the project. Our commitment has not gone unnoticed. Our company's goal to score zero accident record. We have built our company reputation on doing the right thing the right way on everything we do. The loyalty, honesty and responsibility of our pes and partners contribute to the firm's passion for making a positive difference in our community and our industry.





OUR VALUE

COMMITMENT

- We are committed to the success of our business and our organization.
- We value professionalism and technical mastery.
- We are disciplined in generating the highest productivity.
- We extend our innovation to its maximum potential.
- We recognize the environment as a major business issue.

TRANSPARENCY

- Honesty, leadership, integrity and quality.
- Customer satisfaction and loyalty.
- Reliability.
- Responsibility.

TRANQUILITY

To become the first choice of our customer, we will strive to serve our customers to their needs and expectations with our experienced and potential employers.

To serve local industries by giving priority to procuring and installing local quality products manufactured in UAE.

To be the Pioneer in advancing UAE economy and Community.

To be one of the best constructions and maintenance companies in UAE and GCC.





OUR AMBITIONS

We aspire to work on the largest MEGA-structure projects in the U.A.E and become one of the major companies at the level of the Gulf and the World, and to expand the company's stretch branches outside the U.A.E.



OUR GOALS

- Commitment to ethical values among employees and in relations with third parties.
- Commitment to honesty and transparency, professionalism and quality.
- Striving to stay in the forefront of competitive racing.
- Ensuring HRD
- Provide the necessary financial resources for mastering project implementation and quality assurance
- Preparing strategic plans for quick response and good handling errors and potential accidents.





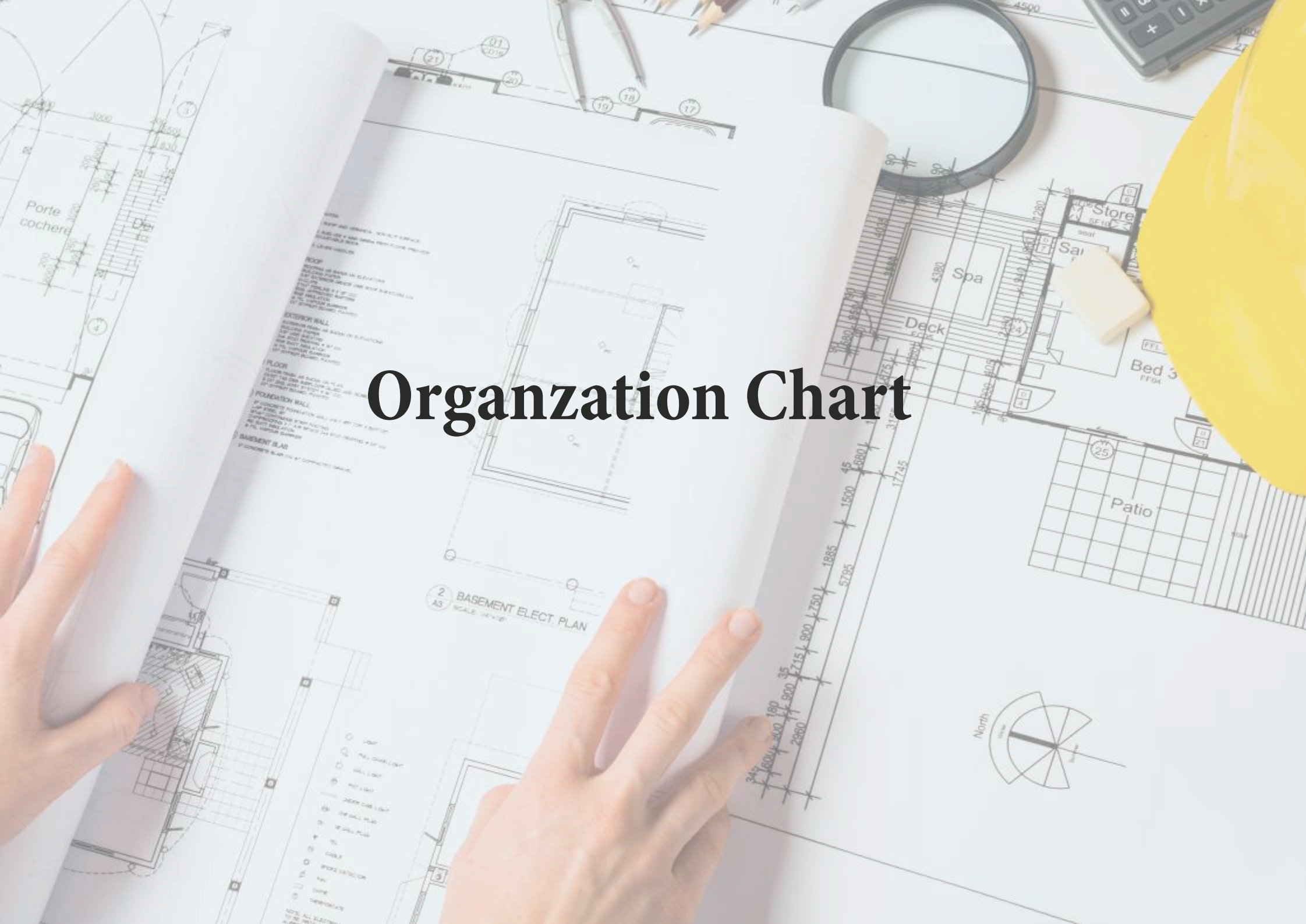
The background of the slide features a close-up of a hand holding a pen, poised to write on a document. The image is overlaid with a semi-transparent grid and several circular icons. One icon at the top right shows a handshake, another at the bottom center shows a document with a checkmark, and a third at the bottom right shows a checklist with a checkmark. The overall aesthetic is professional and tech-oriented.

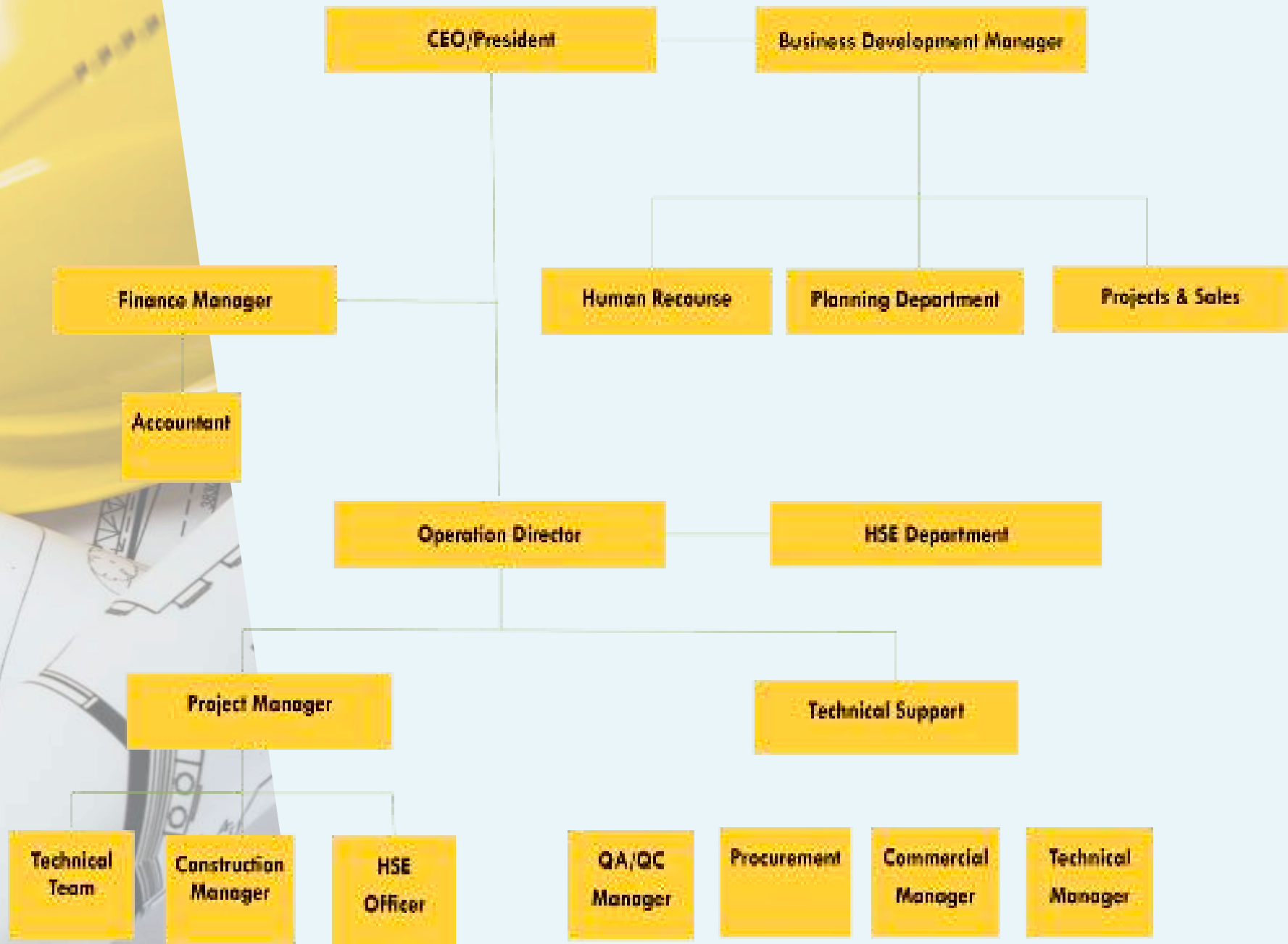
RELIABILITY

The relevance of our business today is testament to our founder's foresight. Duss made sure we had all the ingredients we needed to grow Buildcos well into the future. We are bold and innovative, we value knowledge, we do what matters and we look for common interests and purposeful outcomes. Donec blandit libero eros, at auctor orci sagittis in. Praesent faucibus ex risus, vitae condimentum est hendrerit sit amet.

ISO & Company Registration Certificate

Organization Chart







EHS and HSE Policy

POLICY

ENVIRONMENT, HEALTH AND SAFETY (EHS) POLICY

Dominion Contracting Company, provides construction and Engineering Solutions. The company is committed to fully comply with all the relevant federal laws, and Emirate laws, statutory and contractual requirements, guiding principles of Abu Dhabi EHS Policy and the latest version of BS OHSAS 18001 and ISO 14001 standard, as applicable to its operation.

This policy will be a basis of our Environment, Health and Safety Management System and shall provide a framework for setting our EHS objectives and targets.

The company is committed to take all necessary actions to promote good health, provide safe working conditions, protect and preserve environment and thus prevent accidents, injuries, pollution and any adverse effects in the Environment, Client, Owner, Employees, Visitors, Suppliers, Subcontractors and company assets. This will be achieved by controlling significant hazards and impacts identified through a structured risk assessment for Environment Health and Safety issues.

The CEO has the overall responsibility for Environment, Health and Safety management, will give priority to EHS in all business issues, and will provide adequate resources. However, it is the responsibility of all managers, engineers, supervisors and workforce to understand their role in implementing this policy and comply with all requirements.



LOBBY
10'-0" x 15'-0" = 15'-0"

SITTING HALL / DINING
22'-10.5" x 14'-5.5"

OFFICE
12'-0" x 10'-0"

STORAGE-01
12'-11.5" x 8'-0"

LOBBY
8'-5.5" x 4'-5"

OPEN
5'-0" x 2'-0"

STORAGE ROOM
10'-0" x 12'-0"

POLICY

HSE POLICY

Introduction:

At Dominion Contracting Company, we believe that safety is the number one priority that should be considered fully as we believe that everyone should leave the job site at the end of the day injury free. Moreover, the progress of the project within the contexts of time and cost are directly dependent on a safe job site. It is for the reasons mentioned that Dominion is determined to enact its HSE program and ensure full compliance within protocol. The safety procedures are to be implemented to fit each project and are to be reviewed periodically in order to ensure that each employee has an understanding of the safety protocols, as well as making updates as necessary.

Purpose:

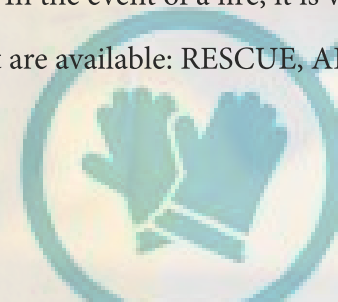
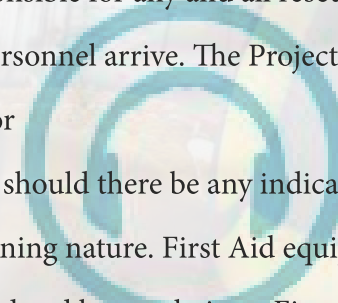
The purpose of the Emergency Action Plan/Evacuation Plan is to be prepared for any emergency that may be expected to occur at the workplace. Some examples of emergencies that may be expected to occur are fires, floods, electrical power failures, chemical spills, as well as collapsed walls and roofs. Dominion's plan is designed to plan for these emergencies and to be prepared for any other emergency as much as possible, realizing that not every emergency can be prepared for in advance.

Medical Responses:

Medical Emergency Procedures: The Project Safety Officer or a competent person available at the time is responsible for any and all rescues and treating the injured until emergency medical personnel arrive. The Project Safety Officer or Management staff will always call for Emergency medical service should there be any indication the situation is of a time sensitive or life threatening nature. First Aid equipment will be located at each first aid station as mandated by regulations. First Aid stations will be marked by appropriate signs. All employees will be instructed to the location of these stations.

Fire Emergency Procedures:

The most frequent cause of fires is careless smoking, chemical/oil fires, or welding. It is very important that all employees know the location of safety equipment; it could save your life. In the event of a fire, it is vital that all employees utilize the four major tactics that are available: RESCUE, ALERT, CONFINE AND EXTINGUISH



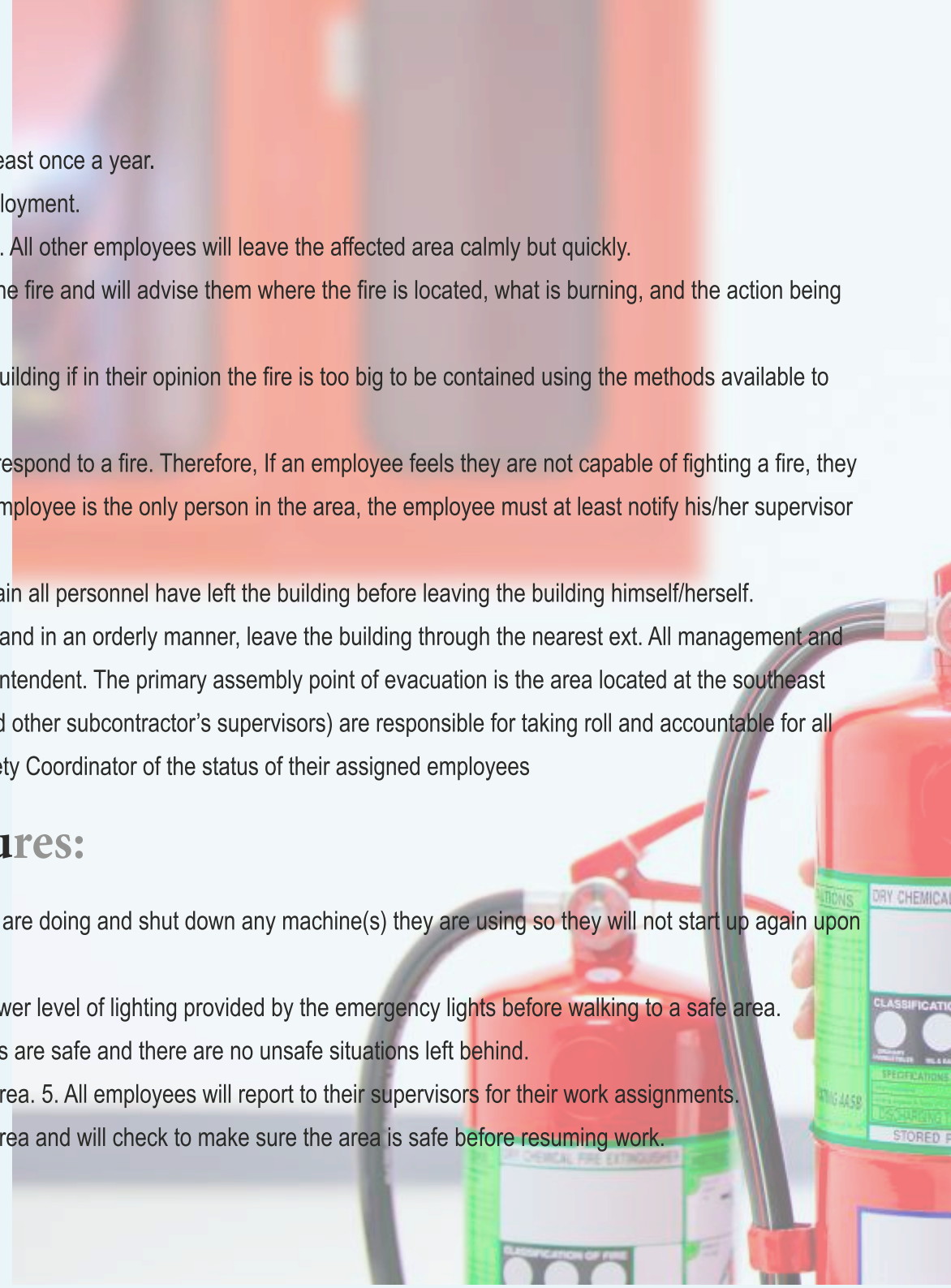


Emergency Procedures for Fire:

1. All Company employees will be trained in the use of fire extinguishers at least once a year.
2. New employees will be trained in the use of fire extinguishers prior to employment.
3. The employees in the immediate area of a fire will try to extinguish the fire. All other employees will leave the affected area calmly but quickly.
4. The employee(s) of the affected area will notify supervisory personnel of the fire and will advise them where the fire is located, what is burning, and the action being taken to control the fire.
5. The employee(s) fighting the fire may call for an evacuation of the entire building if in their opinion the fire is too big to be contained using the methods available to them.
6. The company realizes that not every employee has the ability to properly respond to a fire. Therefore, If an employee feels they are not capable of fighting a fire, they may leave the area with the rest of the employees evacuating. But, if the employee is the only person in the area, the employee must at least notify his/her supervisor of the emergency so that the supervisor can sound the fire alarm.
7. The supervisor will check all rooms, closets, rest rooms, etc. to make certain all personnel have left the building before leaving the building himself/herself.
8. When an evacuation of the building is called for, all employees will calmly and in an orderly manner, leave the building through the nearest ext. All management and field employees will assemble in the area designated by the Project Superintendent. The primary assembly point of evacuation is the area located at the southeast
9. Side of the project at the lunch area. Supervisors (Global Construction and other subcontractor's supervisors) are responsible for taking roll and accountable for all employees in their assigned areas. They will then advise the Project Safety Coordinator of the status of their assigned employees

Emergency procedures for Power failures:

1. When an electrical power failure occurs, all employees will stop what they are doing and shut down any machine(s) they are using so they will not start up again upon the re-energizing of the electrical power.
2. All employees will stand momentarily to allow their eyes to adjust to the lower level of lighting provided by the emergency lights before walking to a safe area.
3. Supervisors are to check their assigned areas to ensure that all employees are safe and there are no unsafe situations left behind.
4. Area supervisors will advise management of the status of their assigned area. 5. All employees will report to their supervisors for their work assignments.
5. When power is restored, all employees will return to their assigned work area and will check to make sure the area is safe before resuming work.



A person wearing a blue long-sleeved shirt and a black safety harness is holding a red fire extinguisher. The background is a bright, slightly blurred outdoor setting.

Chemical Spill:

Spill Containment and Security Equipment will be located in the red conex container on the lay-down area located on the north side of the job site. Every contractor and sub-contractor is responsible for providing their employees with Personal Protective Equipment (PPE) -MSDS sheets will be located in the Global Construction trailer in the safety room were any questions will be answered by our safety coordinator or representative assigned to the specific project. When a Large Chemical Spill has occurred: immediately notify the designated official and Emergency Coordinator Contain the spill with available equipment (e.g. pads, brooms, absorbent powder, etc.). Secure the area and alert other site personnel. Do not attempt to clean the spill unless trained to do so. Attend to injured personnel and call the medical emergency number, if required. Call a local spill cleanup company or the Fire to perform a large chemical (eg, mercury) spill cleanup.

When a Small Chemical Spill has occurred:

- Notify the Emergency Coordinator toxic fumes are present, secure the area tapes or cones) to prevent other personnel from entering. (with caution tapes or cones) to prevent other personnel from entering.
- Deal with the spill in accordance with the instructions described in the MSDS, Small spills must be handled in a safe manner, while wearing the proper PPE. Review the general spill cleanup procedures.

Emergency Escape Route Floor Plan or Diagram:

Floor plans or drawings will be strategically located in the Project Superintendent's Subcontractor's trailer, and throughout the jobsite. Project Safety Officer, will provide copies of the drawings.

Search and Rescue:

In the unlikely event anyone is not accounted for, and emergency rescue personnel is not available, the Project Superintendent, Project Manager, Project Safety Officer, and one other person may re-enter the premises and make a search for the missing persons. At no time will the search party attempt any procedure that will endanger themselves. The company does not maintain the needed equipment and employees are not trained in appropriate rescue procedures. Immediately upon arrival of the fire department or other rescue team, notify them of the missing person and if possible, the likely location of this person, and anyone that has re-entered the facility.

Documentation:

As part of the HSE plan, Dominion will keep a number of documents related to safety protocol and record. These include, but are not limited to:

- MSDS (Material Safety Data Sheets)
- Reportable accidents.
- Evacuation Maps.





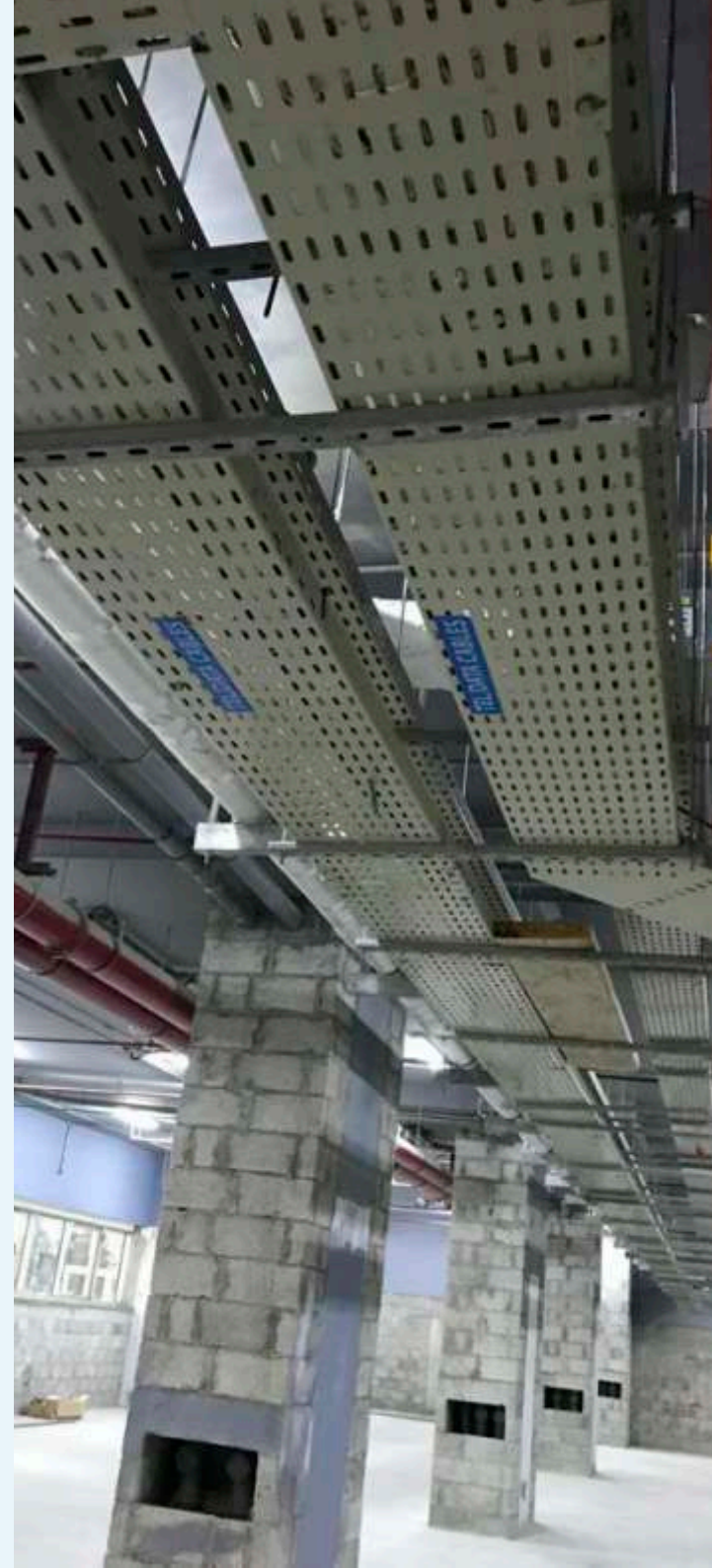


RECENT COMPLETED PROJECT

CIVIL WORKS







ELECTRICAL DIVISION

The Electrical Division is ready to carry out all types of electrical systems from Power Distribution to Low Voltage System In accordance with the National and International standards to the top quality, efficiency, productivity and to the satisfaction of our clients.

Medium and Low Voltage Switchgear and Cabling.

Electrical Distribution System.

ELV Systems





MECHANICAL DIVISION

The Mechanical Division is involved in a very pro-active way to ensure that the project requirement is achieved. We are ready to carry out all Mechanical works, with the top quality, efficiency, productivity and to the satisfaction of our clients.

*HVAC.

*CO Monitoring and Control.

*Plumbing and Drainage.

*Kitchen Hood and Exhaust system.

*Fire Fighting/Protection System.

*Smoke Exhaust System.

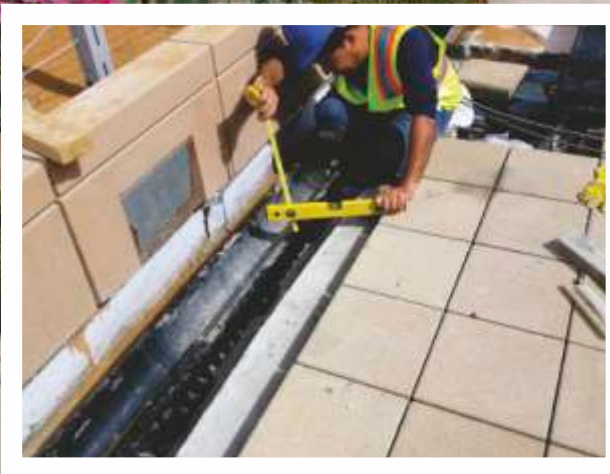
*Mechanical Car Park Ventilation.

*FM200 and Deluge system





DRAINAGE SYSTEM



WATER SUPPLY SYSTEMS



FIRE FIGHTING SYSTEM

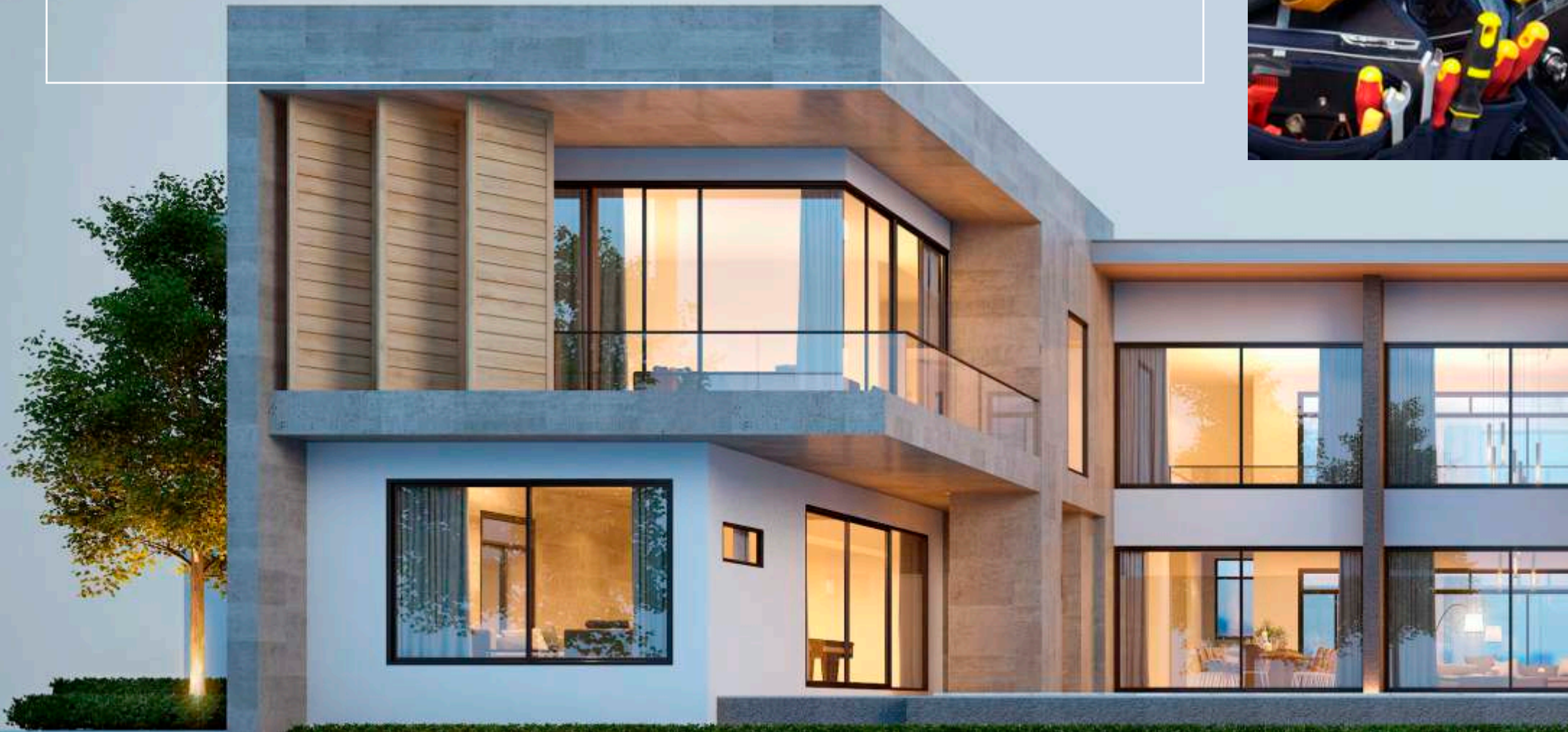


HVAC SYSTEM



MAINTANANCE

The Maintenance Division is ready to carry out all types of maintenance works, covering large and medium scale facilities in accordance with the National and International standards to the top quality, efficiency and to the satisfaction of our clients.

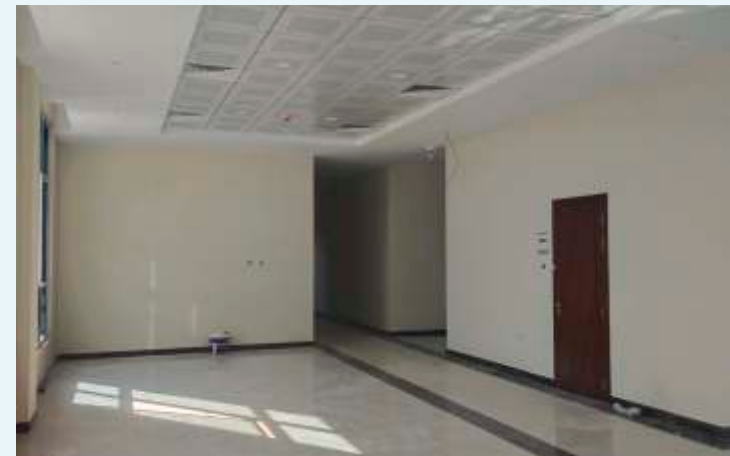




DECORE

Buildcos team of dedicated hospitality professionals work together to meet client goals and ensure smooth, timely and cost effective project delivery across the United States. We combine tailored, client focused service with our commitment to quality and work to raise safety standards across the hospitality sector.

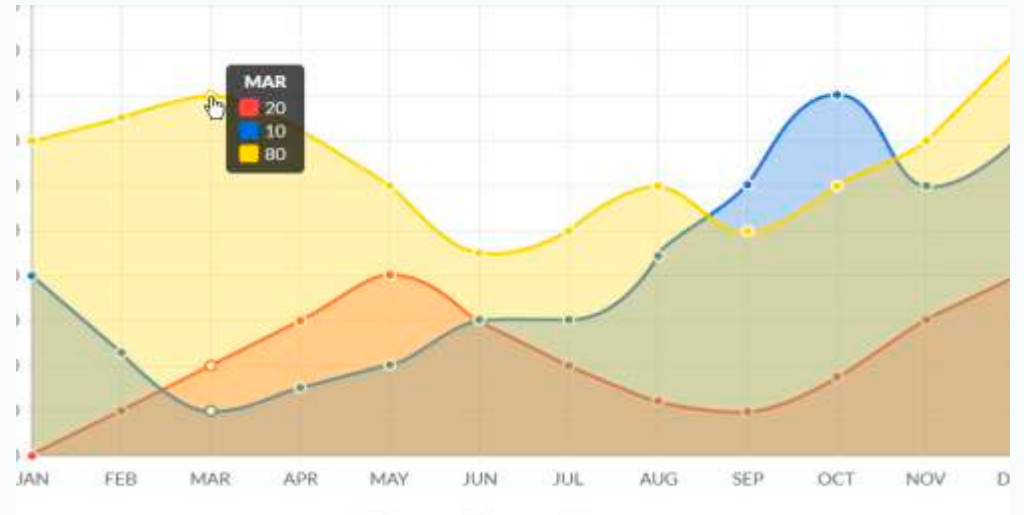
Many of the iconic features of the historic Old Post Office building were preserved during its transformation into a luxury hotel, which features 263 guestrooms and suites averaging more than 600 square feet, making them the largest in Washington D.C., with lofty 16-foot ceilings, soaring windows, beautifully restored historic millwork, and glittering crystal sconces and chandeliers. In addition, two extraordinary Presidential Suites are located in the historic former offices of the Postmaster General. At 3,500 and 5,000 square feet, the three-bedroom suites are among the largest in the country.





Our Solutions & PROJECT BENEFITS

We are continuing to drive forward, constantly increasing productivity, and utilising technology advancements and sustainable practices to maintain our competitive advan-





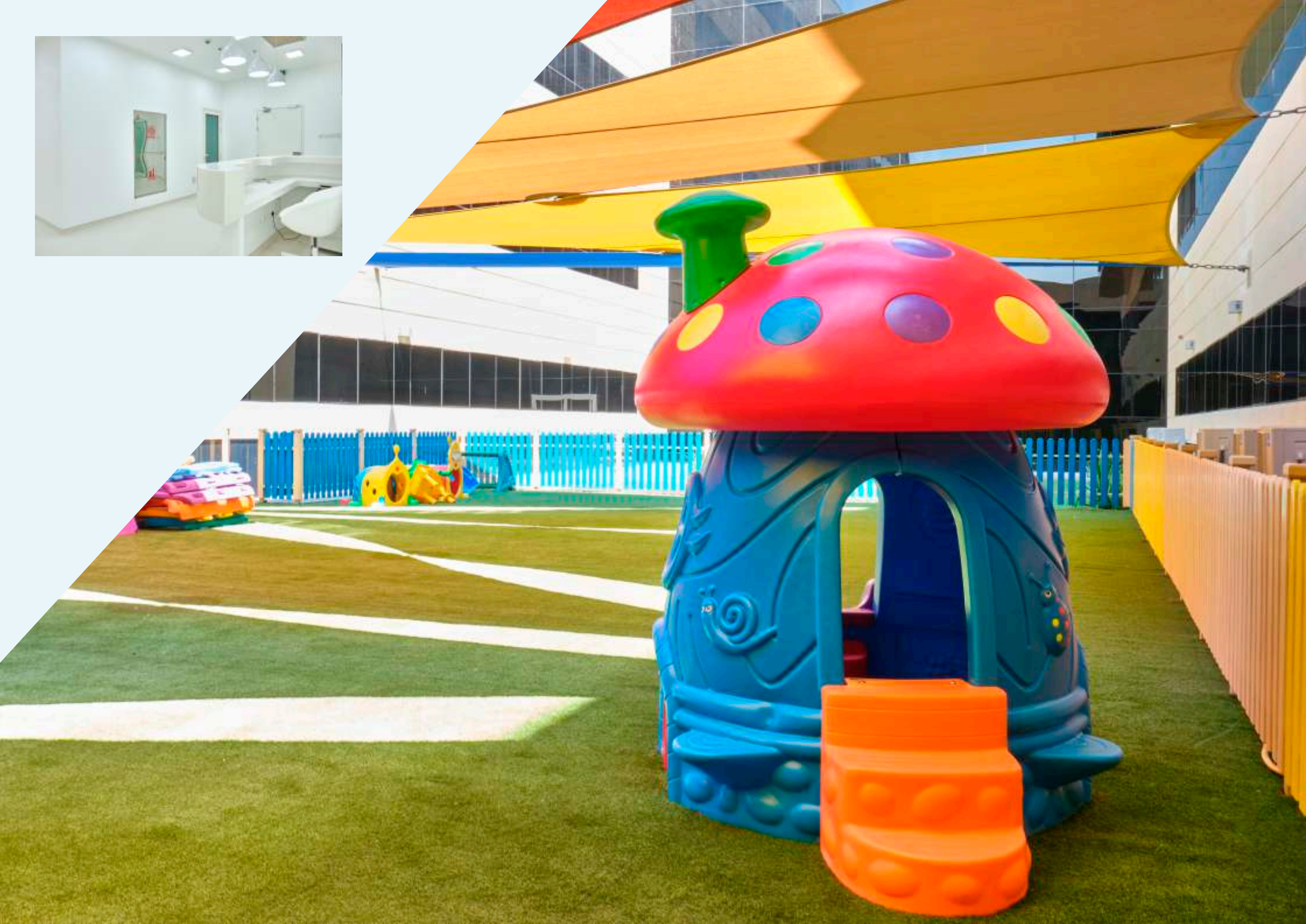
LECTURE HALL AL QASMI HOSPITAL





NURSERY AL QASMI HOSPITAL





AL AIN ZOO

